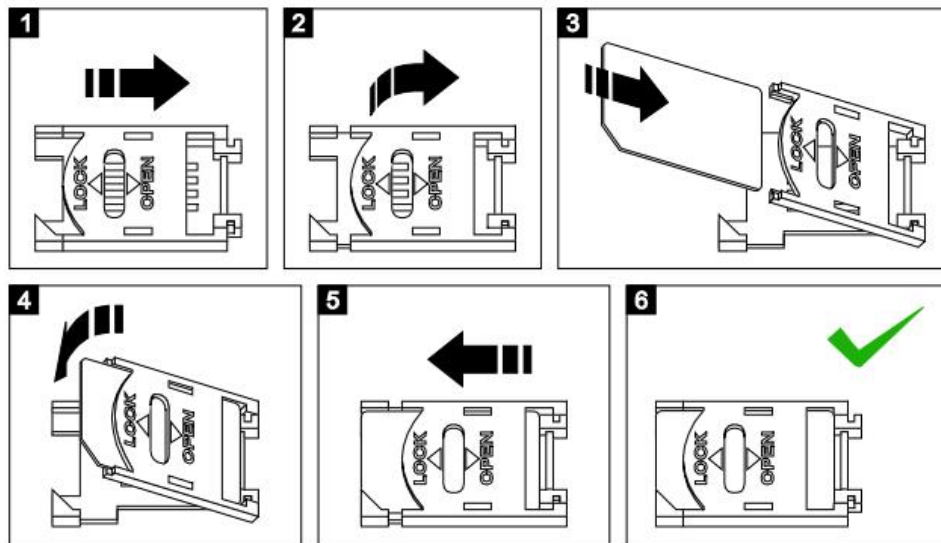


# EMERGENCY GSM DIALING MODULE

## Quickstart installation

1. Open the device box and insert the SIM card into the holder as shown in the picture below. Make sure the PIN code was disabled before that. The SIM card have to be with allowed voice and SMS services.



2. Connect the GSM antenna to the module.
3. Install a push button (with N.O. contact) for triggering an emergency call and a LED indicator for its status (12V rated or with 1k $\Omega$  resistor in serial) inside the lift cabin.
4. Wire the button between terminals **IN1** and **IN2**. Connect the indicator to + **12V OUT** and **LED OUT** terminals (keep in mind its polarity).
5. Connect the microphone to the **MIC-** and **MIC+** terminals. The red wire has to be connect to MIC+ terminal.
6. Power up the module from the cabin's power supply or other suitable power source with the proper voltage.
7. After powering on the module, it will need up to 1 minute to connect to GSM network. The connection is successful after blinking of module's internal LED is change from fast to slow.
8. To program the **primary** service number, following SMS have to be sent to the module: **t1,+359xxxxxxxxx** (where the first part is the country code and the **xxx...** are the digits of the primary service number). **For example:** a phone number 0888 123456 shall be sent in SMS as **t1,+359888123456**
9. If the module receives the sent SMS successfully, it will reply you back with confirmation.

10. In order to make a full run test, push and hold the connected button for 5 seconds. The connected LED indicator will start to blink and the module will start to dial the primary service number. The test will complete successfully when a call to this number is made.
11. Close the device box and mount it on a suitable place behind the button panel.

### **ATTENTION:**

If the SIM card inserted is not allow to send SMS, then you will not be able to receive any replies from the module. As a backup option, the SMS delivery notification can be use. It has to be allow in the sending phone before that.

If the primary number has not been send correctly or is not available any more, the only way to change or remove it is to reset the module to the factory settings.

For any additional features, visit our website and download the complete user manual: [www.smart-hitech.eu](http://www.smart-hitech.eu)