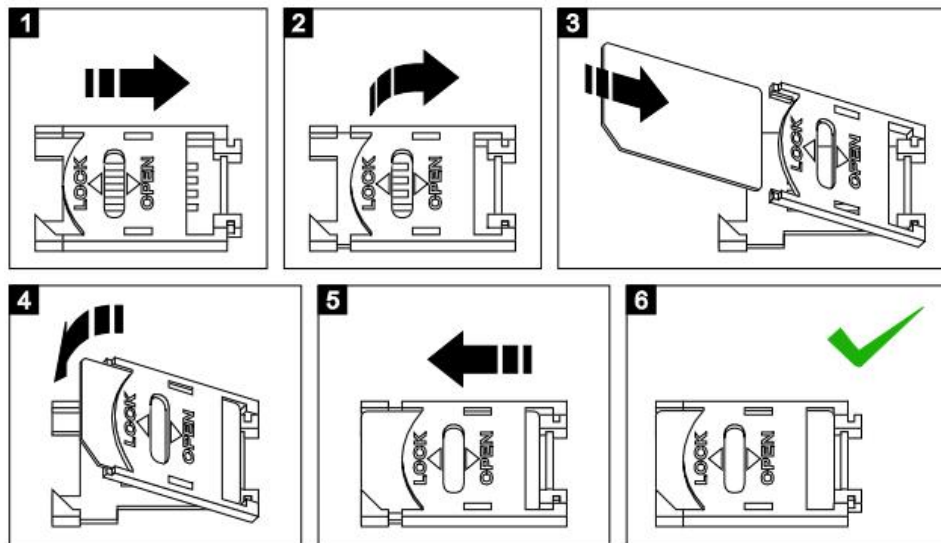


GSM DIALING MODULE FOR REMOTE CONTROL

Quickstart installation

1. Open the device box and insert the SIM card into the holder as shown in the picture below. Make sure the PIN code was disabled before that. The SIM card have to be with allowed voice and SMS services.



2. Connect the GSM antenna to the module.
3. Power up the module from a regulated 12VDC/1A power supply or other suitable power source.
4. After powering on the module, it will need up to 1 minute to connect to GSM network. The connection is successful after blinking of module's internal LED is change from fast to slow.
5. To program the **primary** number, following SMS have to be sent to the module: **t1,+359xxxxxxxx** (where the first part is the country code and the **xxx...** are the digits of the primary service number). **For example:** a phone number 0888 123456 shall be sent in SMS as **t1,+359888123456**
6. If the module receives the sent SMS successfully, it will reply you back with confirmation.
7. In order to make a full run test, push and hold the TEST button for 3 seconds. The LED indicator will start to blink and the module will start to dial the primary number. The test will complete successfully when a call to this number is made.
8. To setup the triggering of output 1 after a phone call, the following SMS have to be sent: **call,out,t1**

9. To test this functionality, make a call to the inserted SIM card. The output will change its state and will activate an external relay, if it is connected.
10. Close the device box and mount it on a suitable place.

ATTENTION:

If the SIM card inserted is not allow to send SMS, then you will not be able to receive any replies from the module. As a backup option, the SMS delivery notification can be use. It has to be allow in the sending phone before that.

If the primary number has not been send correctly or is not available any more, the only way to change or remove it is to reset the module to the factory settings.

For any additional features, visit our website and download the complete user manual: www.smart-hitech.eu