

GSM MODULE FOR EMERGENCY COMMUNICATION IN LIFTS ACCORDING TO EN81-28

All settings according to the EN81-28 standard can **ONLY** be made with the **Smart Dialer Service Tool** via PC and a standard micro USB cable. **Smart Dialer Service Tool** is a completely free software-programming tool and is available for download from our website:

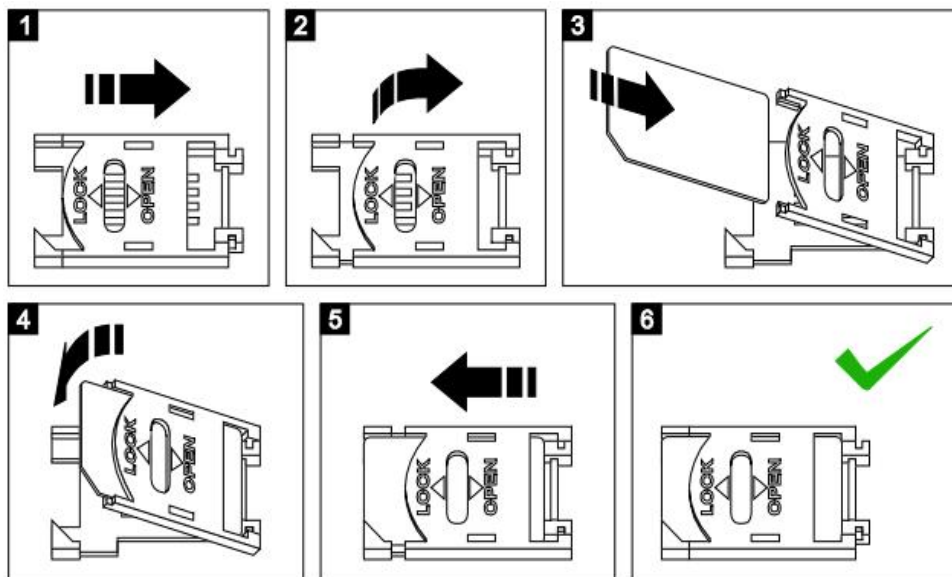
www.smart-hitech.eu

Further changes to the settings can be made via smartphone application or web browser through the *Cloud* system. In order to do this, the connection to the *Cloud* has to be establish first.

This device uses a SIM card from a mobile operator. This card has to be with allowed voice and SMS services. It has to be with mobile internet included in order to connect to the *Cloud* system.

Installation steps:

1. Connect the device to a PC using the USB cable. After connecting it to the service tool, the phone numbers of the rescue service have to be set first – *T1, t2, t3* and so on.
2. From the "*Patterns*" button, select the "*EN81-28*" option. Thus, all settings related to the device operation according to lift standard EN81-28 are filled in automatically.
3. Finally, the "*Upload to device*" button must be set in order to save the changes into device.
4. In order to control the module remotely, the connection to the *Cloud* system have to enabled via "*IoT Cloud*" checkbox in the *Smart Dialer Service Tool*. The settings for the mobile network - *APN, Username* and *Password*, provided by the mobile operator, have to be set also.
5. Open the device box and insert the SIM card into the holder as shown in the picture below. Make sure the **PIN code was disable** before that.



6. Connect the GSM antenna to the module.
7. Inside the lift car, install a push button (*with N.O. contact*) for triggering an emergency call and yellow and green LEDs for alarm information.
8. Wire the button between terminals **IN2** and **+12V OUT**.
9. Terminal **IN1** connect to the alarm signal from the lift controller (*or the sensors for unlocking zone and landing doors*).
10. Connect the yellow LED indicator to terminals **OUT1** and **+12V OUT**. Connect the green LED to terminals **OUT2** and **+12V OUT**. The indicators have to be rate for 12VDC or have to be terminate with resistors in series. Keep in mind LEDs polarity.
11. Connect the microphone to the **MIC-** and **MIC+** terminals. The red wire has to be connect to **MIC+** terminal.
12. Power up the module from a regulated 12VDC/24VDC power supply or other suitable power source.
13. After powering on the module, it will need up to 1 minute to connect to GSM network. The connection is successful after blinking of module's internal LED is change from fast to slow.

- In order to make a full run test, press and hold the emergency push button for 30 seconds. The green LED indicator will start to blink and the module will start to dial the main rescue number. The test will complete successfully when a call to this number is made.
- Close the device box and mount it on a suitable place.

